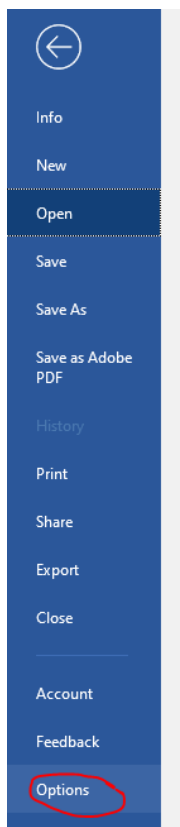
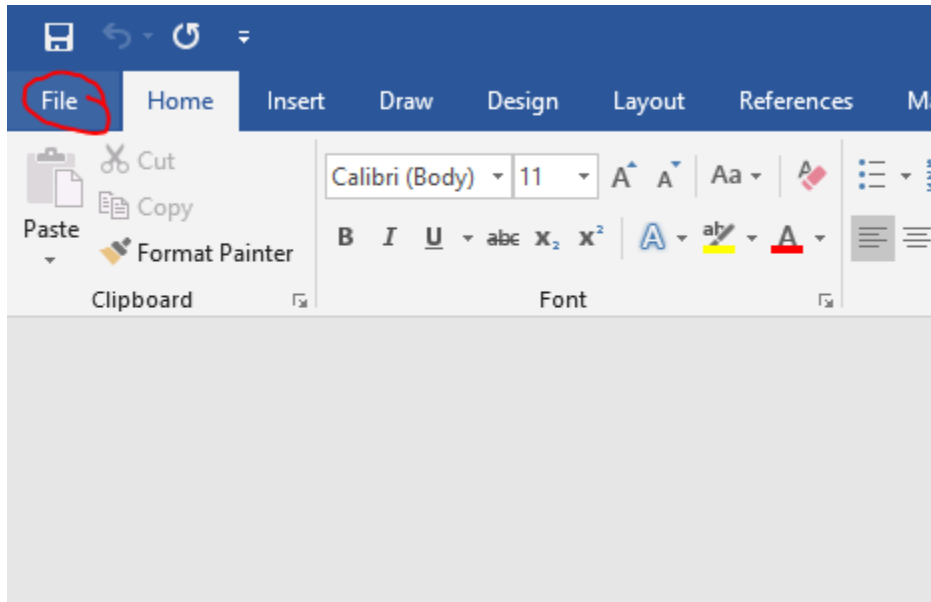
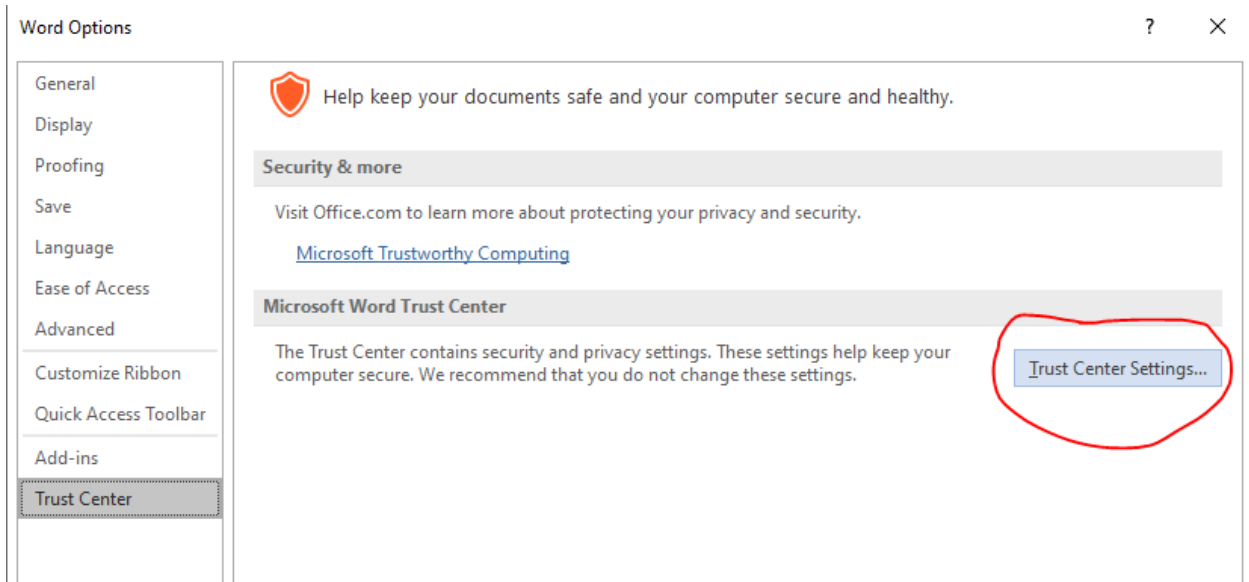


Setting Trust Settings in Office Applications

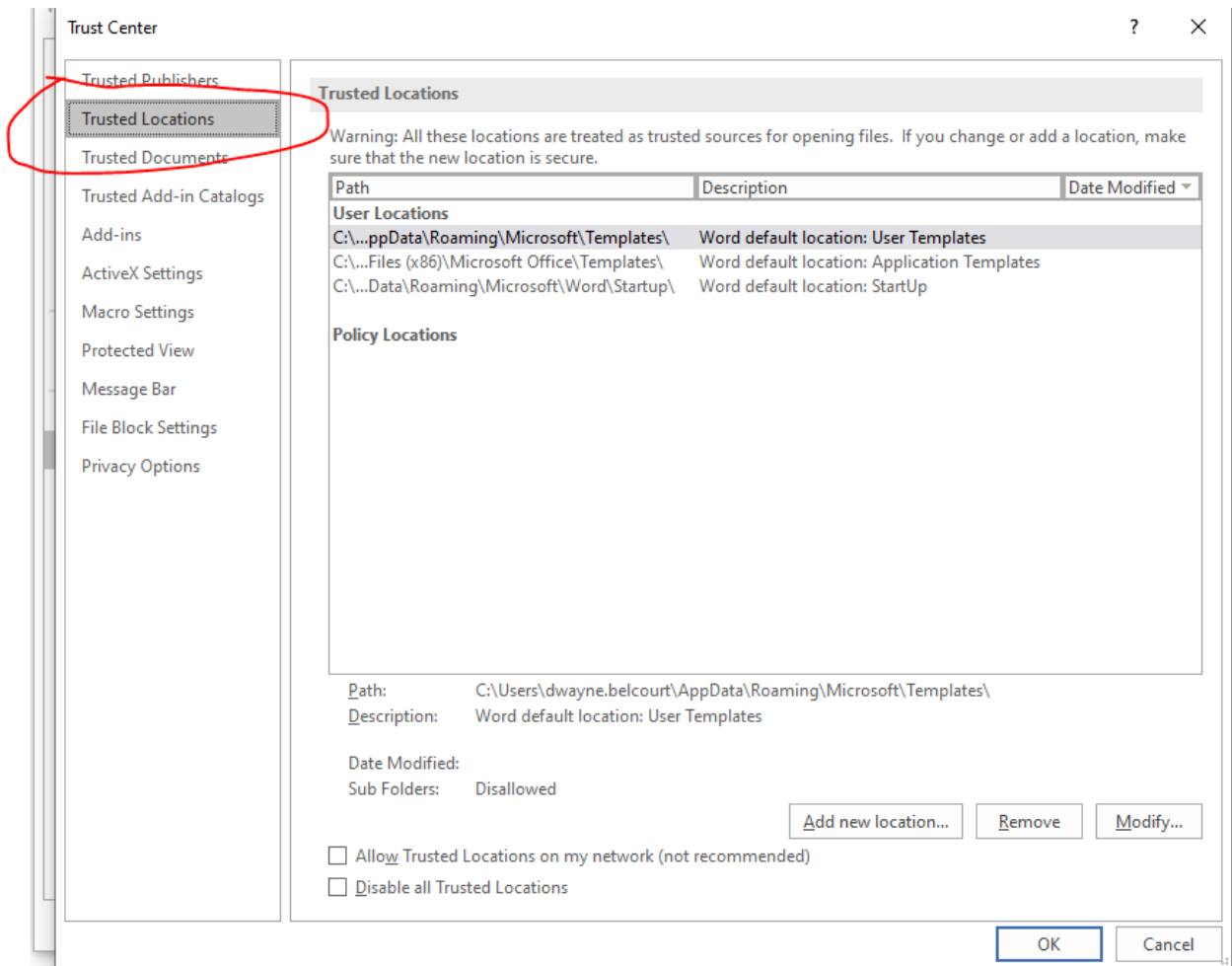
1. Open Office Application
2. Go to File, options



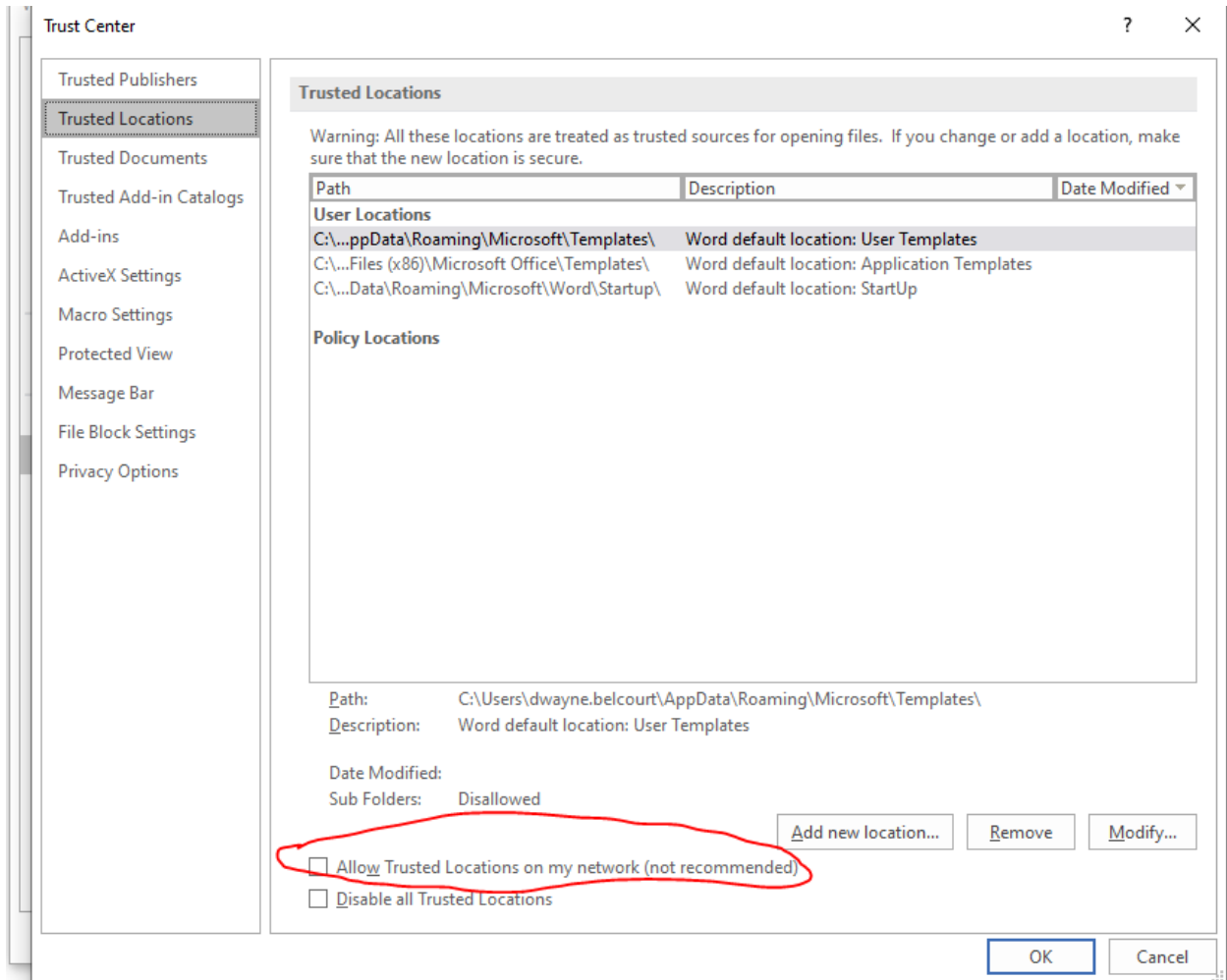
3. That will bring up the Options Window and the you want to go to Trust Centre



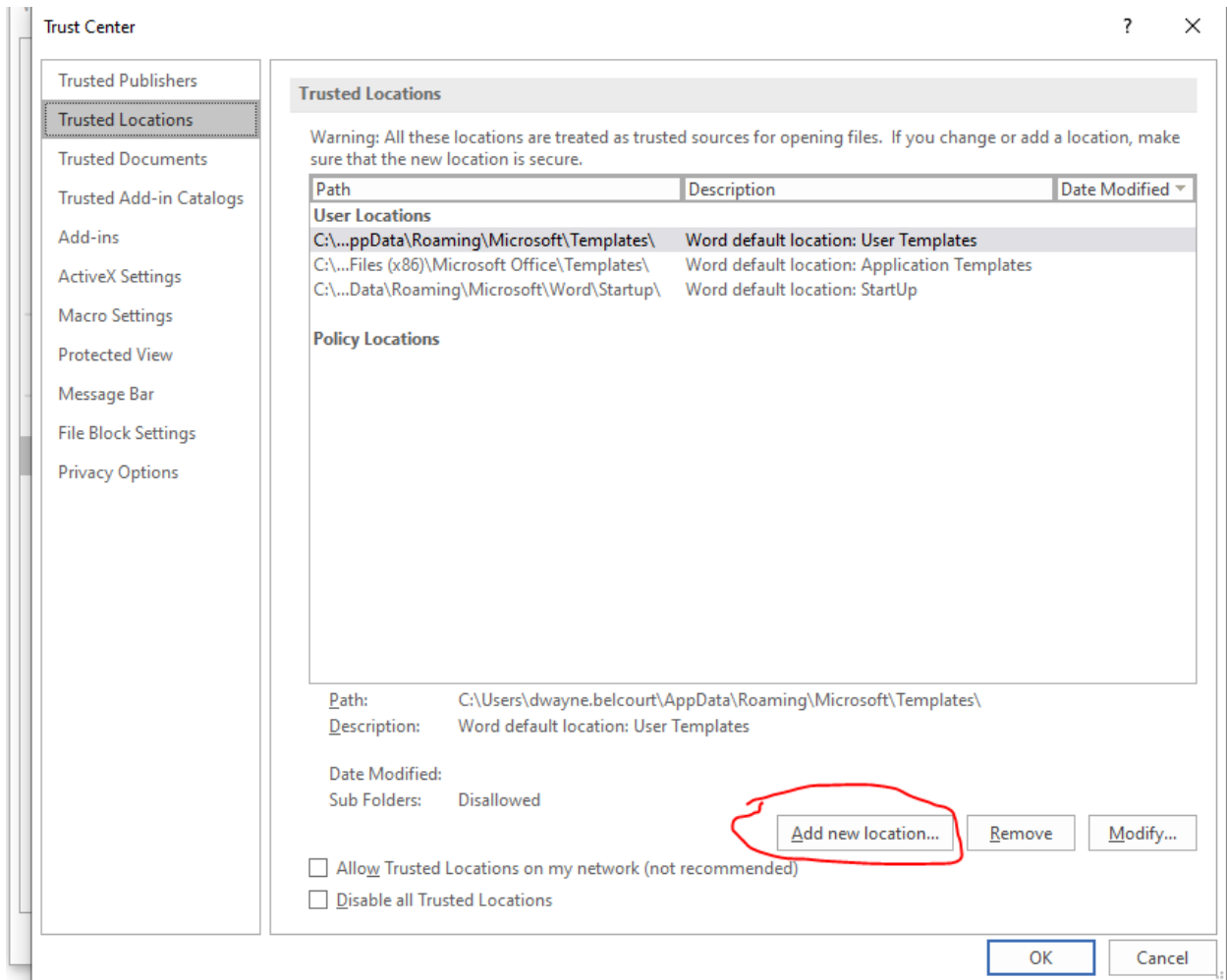
4. That will bring up the Trust Center Settings Window, select Trust Locations



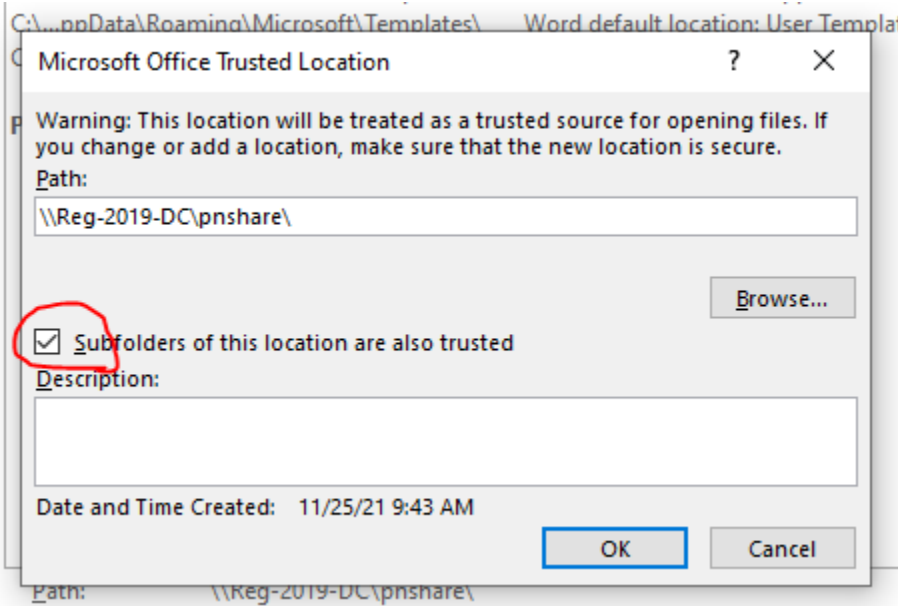
5. You have to click on the Allow Trusted Locations on my Network. I know it says not recommended but click it anyways as it is for the VPN connection from home.



6. Then you want to click on the add new location



- Depending on the share that you want to use while you are connected to the VPN. You can select on the Browse to find the share folder or type in the path **EXP: [\\Reg-2019-dc\pnshare](#)**



- Once you have entered in the path to the Documents and select ok that should take care of the error about enabling content. This will need to be done on any Office application that is opening documents from the network when at home.